

Victoria from Corpse Bride

Version 2.0 (8/30/17)

Pattern by Amy Albin (strangequilting.blogspot.com)

This block should be a 12 inch block finished. There are ¼ inch seam allowances. There are a total of 9 colors. The eyebrows (brown), buttons (dark purple) pupils (black), eyelashes (black), lips (black) and nostrils (black) are embroidered on or can applied with permanent fabric paint/marker. Enjoy! If you have any questions or comments, please email me oddetsy@gmail.com

Construction is as follows:

Make (A+B+C)+(D+E)+(F+G+H) = Body

Make (I+J) = Eyes

Make (K+L)+(M+N+O) =Mouth

Make P. Join to Mouth. Make Q. Join to Mouth.

Join Mouth +Eyes = Face

Make R+(S+T) = Forehead.

Make U. Make W. Join to Forehead. Make X. Make V. Join to Forehead. Make Y. Join to the top of Forehead.

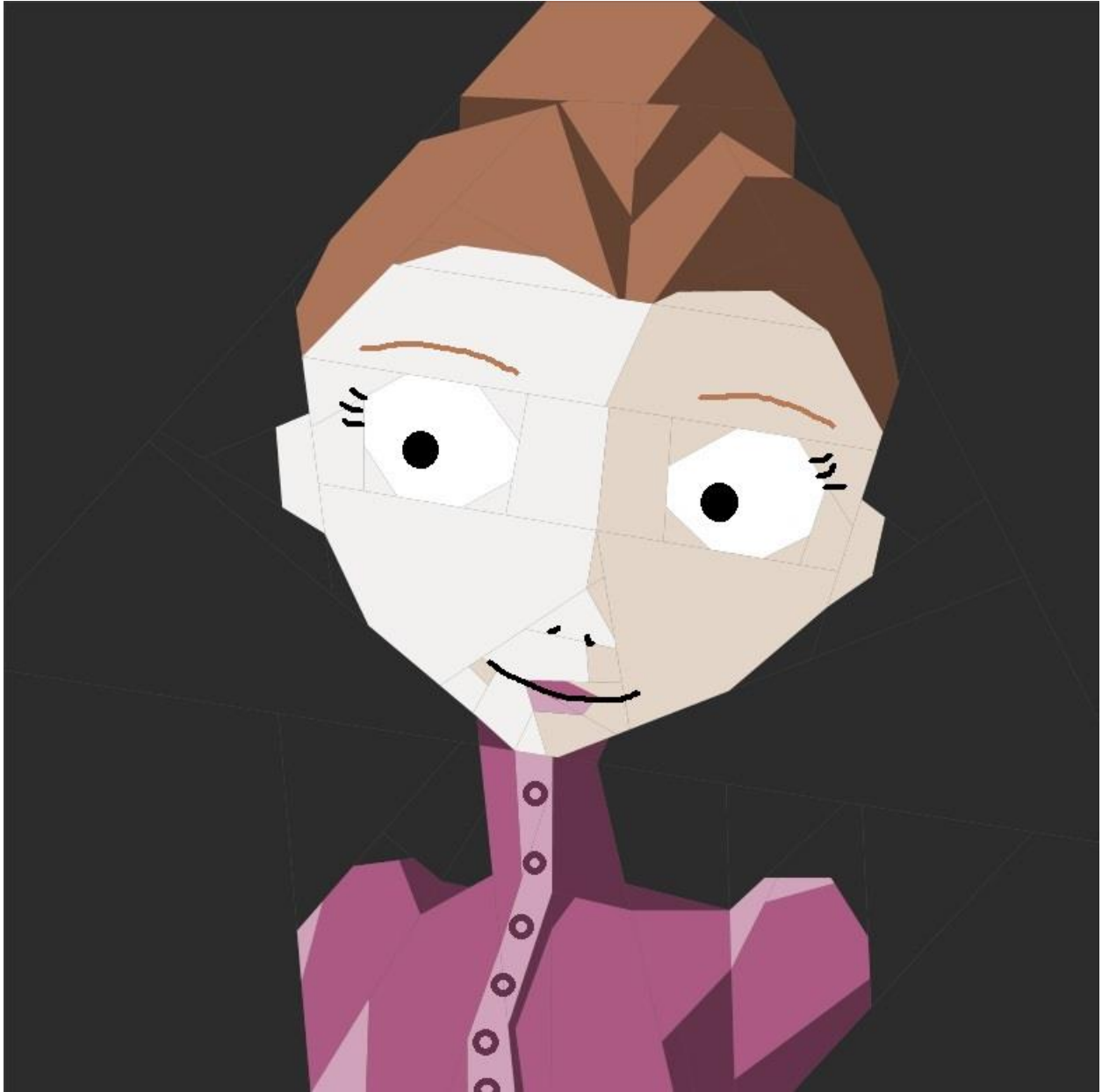
Join Forehead to Face = Head.

Make Z. Join to Head. Make AA. Join to Head. Make AB. Join to Head.

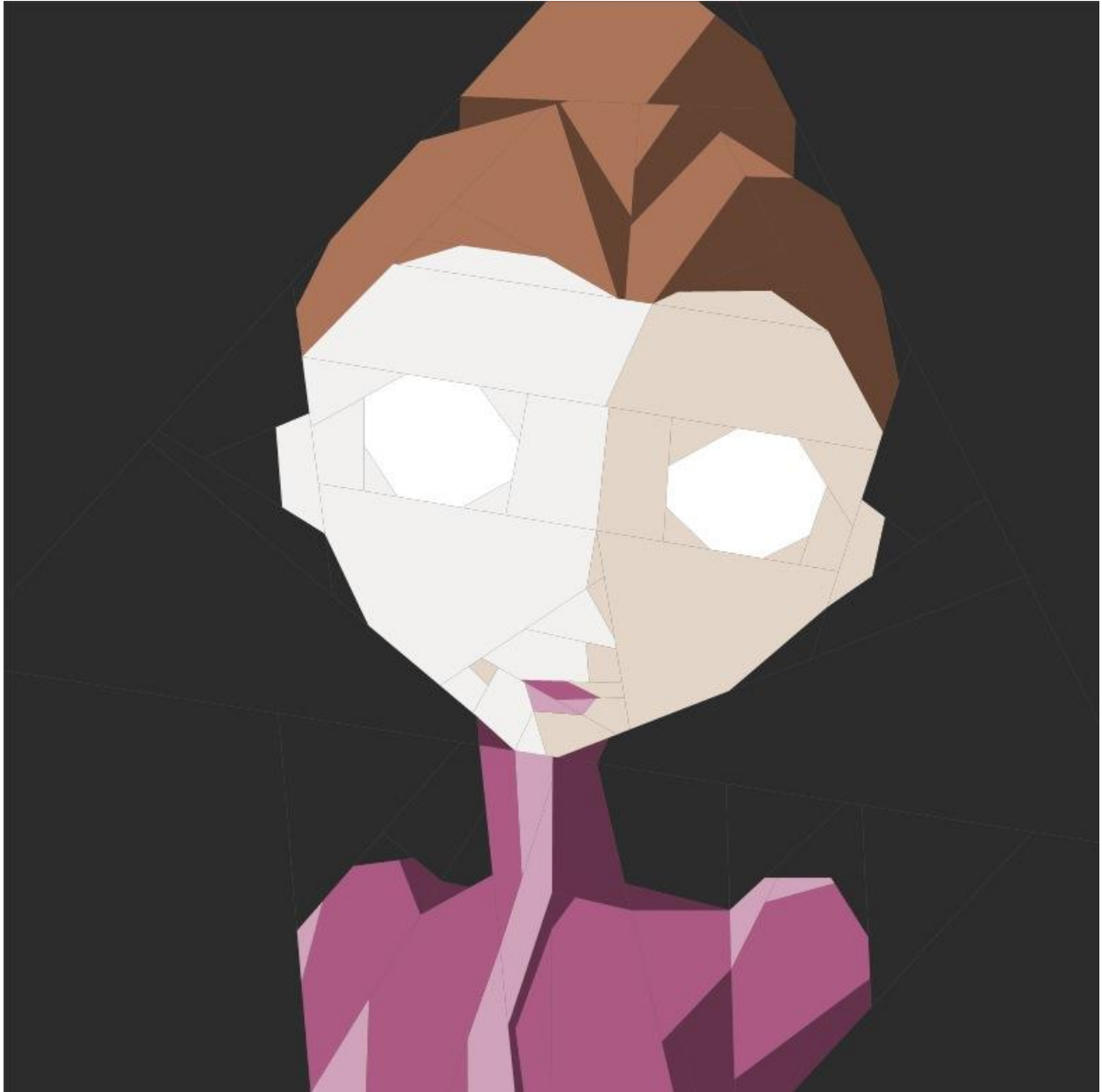
Make AC. Join to Head. Make AD. Join to Head. Make AE. Join to Head.

Join Head to Body.

Embroider as described.



With embroidery



Without embroidery

