

# Emily from Corpse Bride

Version 1.0 (6/12/18)

Pattern by Amy Albin ([strangequilting.blogspot.com](http://strangequilting.blogspot.com))

This block should be a 12 inch block finished. There are  $\frac{1}{4}$  inch seam allowances. There are a total of 9 colors. There are 3 panels that come together to create the block. The pupils for the eyes can be embroidered on or applied with permanent fabric paint/marker. Her eyelash placement is just approximate, feel free to change it up if you think more/less etc. looks better! Enjoy! If you have any questions or comments, please email me [oddetsy@gmail.com](mailto:oddetsy@gmail.com)

Construction is as follows:

## **CENTER PANEL**

Make (A+B+C) = NECK.

Make (D+E+F+G+H+I). Join to NECK.

Make (J+K+L). Join to NECK.

Make (M+N+O+P+Q) = FACE

Make (R+S+T). Join to FACE.

Make U. Make (V+W+X+Y). Join to U = LIPS.

Make Z and join to LIPS.

Make (AA+AB+AC).

Make (AD+AE). Join to LIPS.

Join LIPS to FACE = FACE1.

Join AF, AG, AH, AI and AJ to FACE1. Join FACE1 to NECK.

Make (AK+AL+AM+AN+AO) = FOREHEAD.

Make (AP+AQ+AR). Join to FOREHEAD.

Join AS, AT, AU, AV, AW, AX and AY to FOREHEAD.

Join FORHEAD to FACE1 = CENTER PANEL.

Make AZ.

Make (BA+BB). Make (BC+BD)+BE. Join previous 3 sections together = CROWN.

Join BF. Make (BG+(BH+BI)+BJ). Join to CROWN.

Join BK and BL to CROWN. Join CROWN to CENTER PANEL.

**RIGHT PANEL**

Make  $BM+(BN+(BO+BP+BQ))$ . Join BR = RIGHT.

Make  $(BS+BT+BU+BV+BW)$ . Join to RIGHT.

Join BX to RIGHT.

**LEFT PANEL**

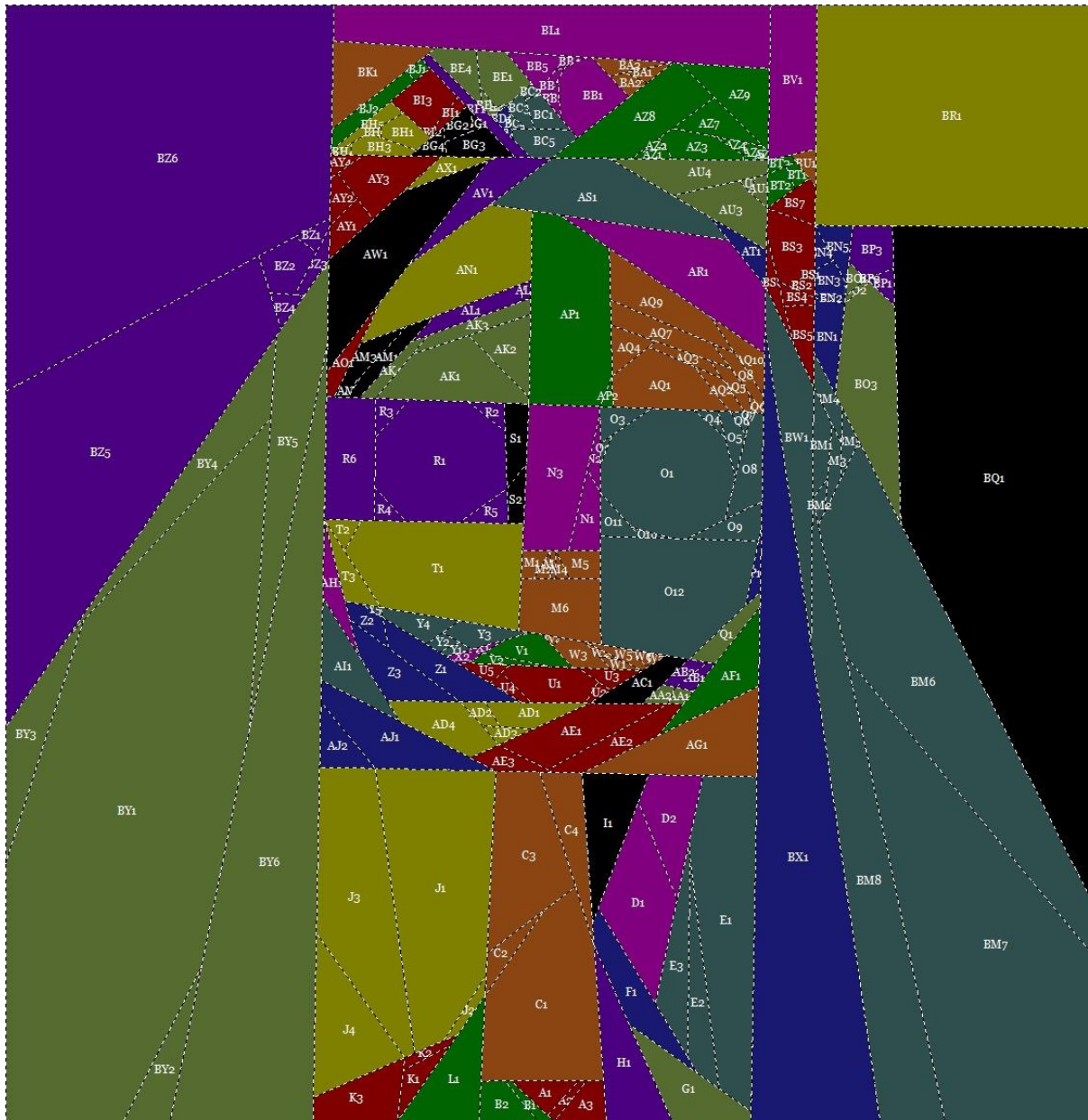
Make BY+BZ.

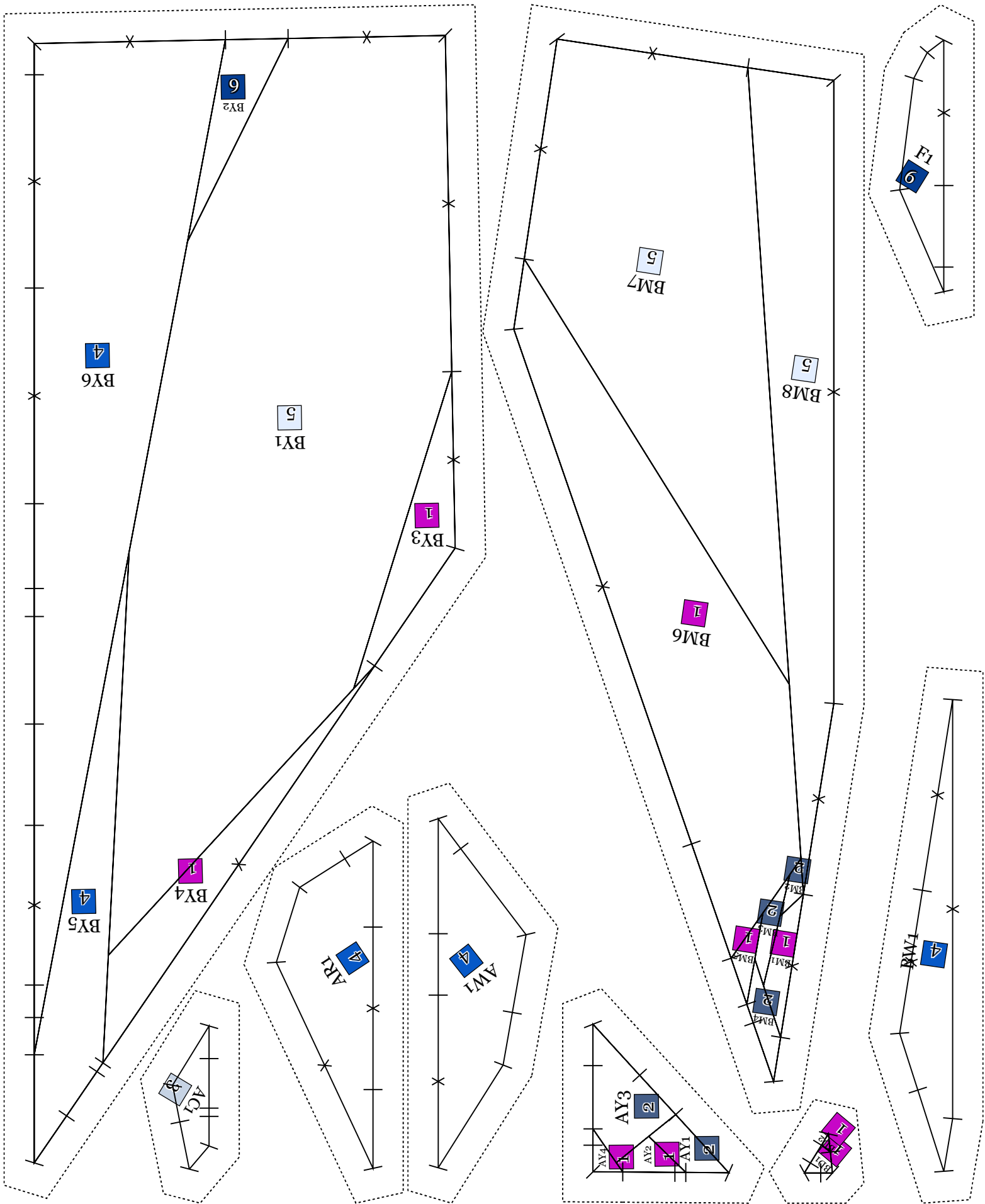
**COMPLETION**

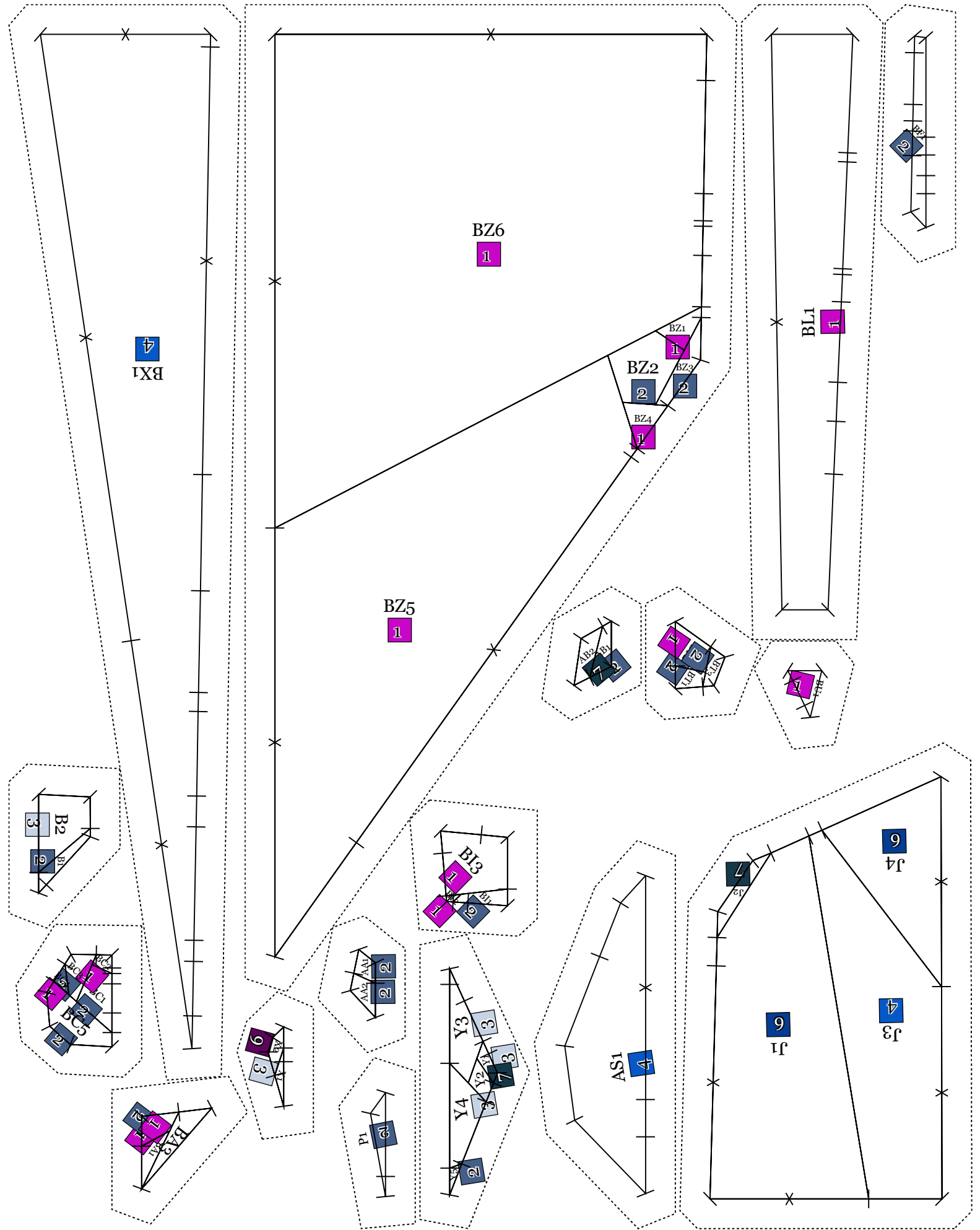
Join LEFT PANEL to CENTER PANEL.

Join RIGHT PANEL to CENTER PANEL.









BX1  
4

BZ6  
1

BL1  
1

BZ5  
1

BZ2  
2

BZ1  
1

BZ3  
2

BZ4  
1

B2  
3

B13  
1

Y3  
3

Y2  
3

Y1  
3

A4  
2

P1  
6

AS1  
4

J4  
7

J1  
9

J3  
4

J4  
6

49

